

# Ravetech

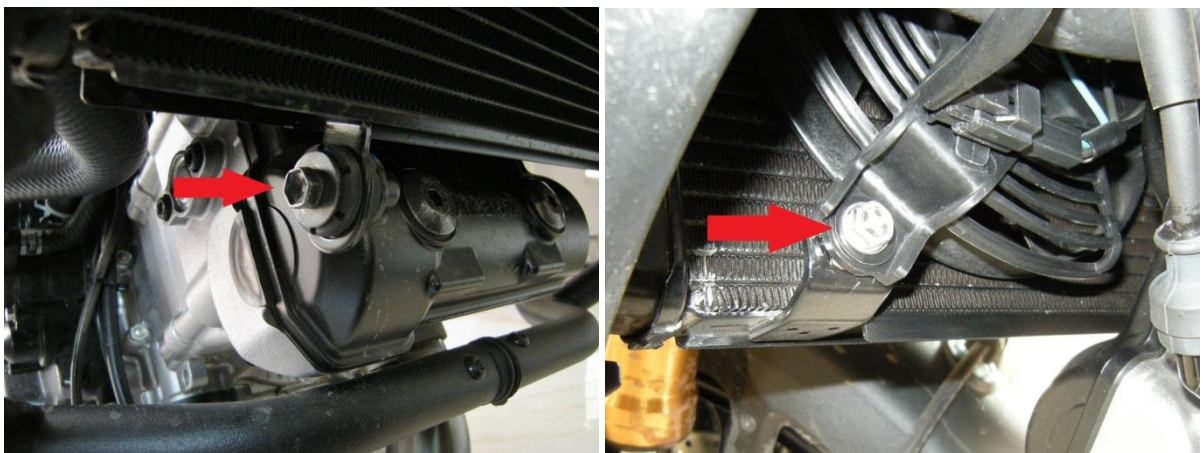
## Installation Guide for Suzuki DL1000 V-Strom 2014+ Radiator Guard

[www.ravetechmotorcycles.com](http://www.ravetechmotorcycles.com)

Remove the top two aluminium tank covers to give access to the top radiator mounts.



Remove the radiator top mount screws, the bottom front mount screw and the fan mount screw found behind the radiator on the left side.



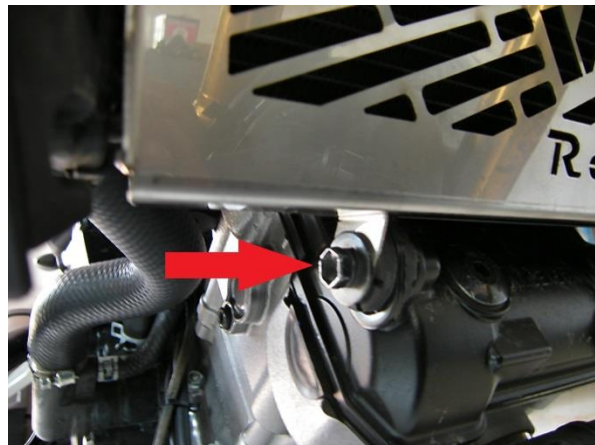
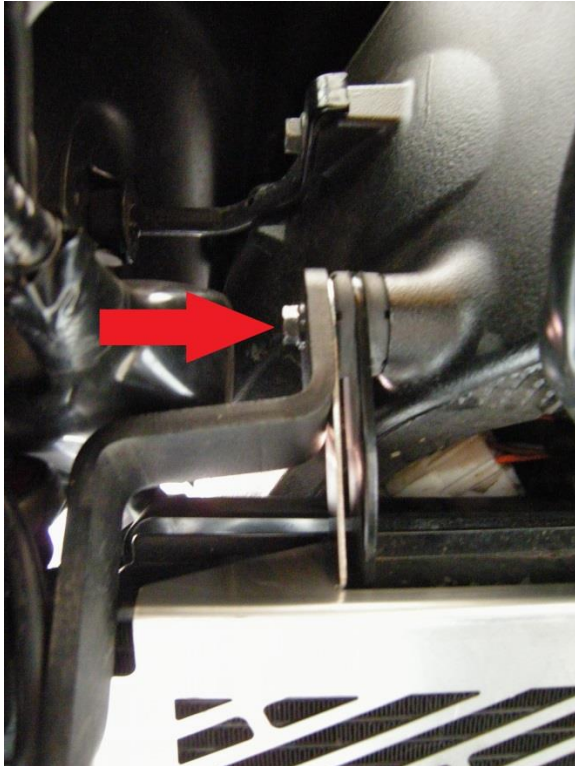
If the bike is fitted with Givi crash bars the two top brackets that fit to the radiator top mounts will need to be loosened or removed to enable the radiator guard to fit behind these brackets.

PTO

Position the radiator guard over the radiator making sure to feed the bottom fan bracket in behind the radiator. This bracket sits between the fan and its mount.

Align the top two rad guard mounts with the radiator mounts & crash bar mounts if fitted. Feed the screw through all parts and screw into the frame mount.

Insert the screws into the bottom radiator mount and the fan mount. Once all the screws are in they can be tightened. **It is advisable to use thread retainer on these screws.**



Refit the top aluminium tank covers and your done. Thank you for choosing Ravetech.

All work undertaken should be carried out by a competent person as improper fitment can cause failure resulting in possible injury or death which Ravetech will not be liable for.